

KOREAN
SERIES

by



SMART MARBLE



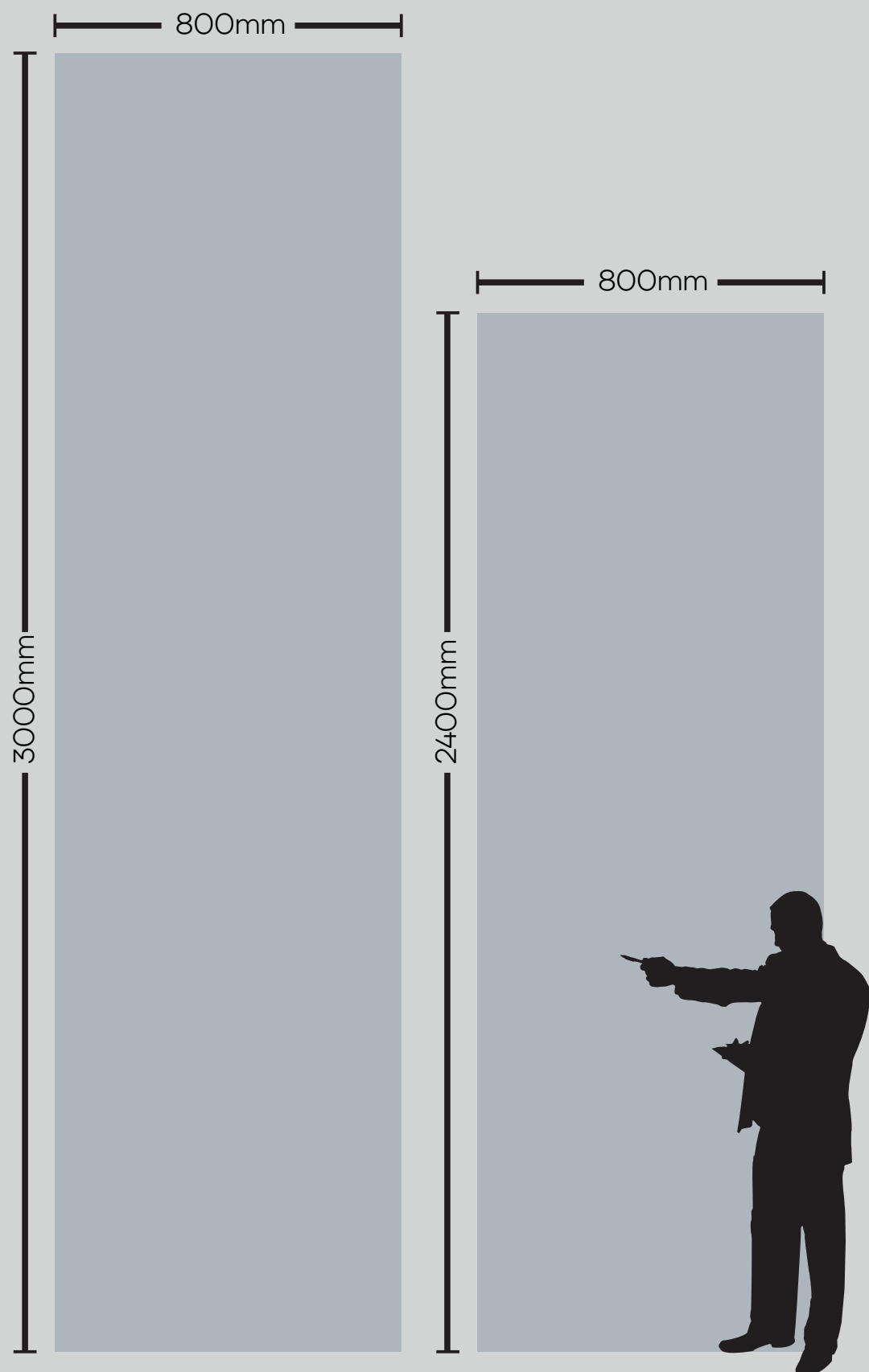
IBIS is a flourishing center for Italian design and tiles. Ibis is a new conglomerate that offers a rich array of products and services in terms of design and manufacturing of tiles. Ibis represents unparalleled technical, artistic and organizational standards that distinguish it from its peers.

IBIS is the essence of years of rigorous research. In its core efforts, Ibis epitomizes the urge to establish new standards and norms in the industry.

Over decades of experience has gone into the makings of this ambitious venture that is set to revolutionize art and craft of manufacturing tiles. Based on ground-breaking research, Ibis has conceptualized its ravishing designs and world-class manufacturing process.

THE NEW FRONTIERS OF SMART MARBLE FROM INDIA

PRODUCT FORMATS



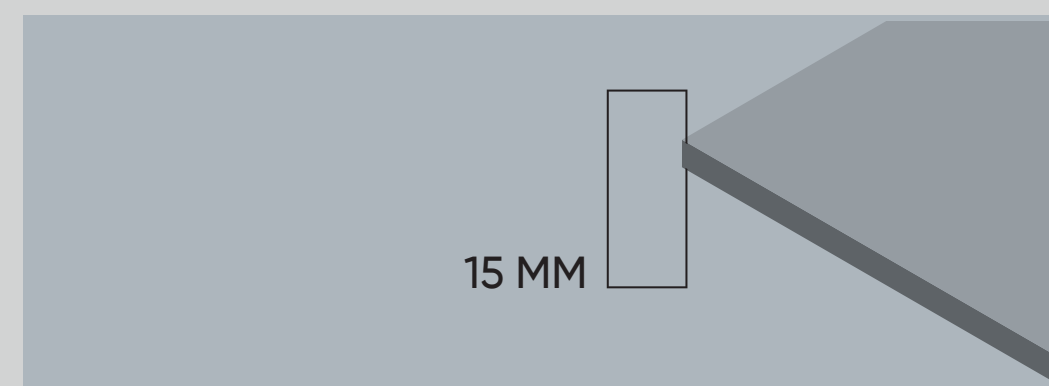
SIZES

800x2400 MM | 800x3000 MM

TPOLOGY
FULL BODY

FINISH
GLOSSY / MATT

THICKNESS
15 MM



The thicknesses are one of the most important elements characterizing ibis.

15 MM is set aside for the most demanding product applications such as kitchen countertops.

KOREAN

BASALT
FEEL

GREYLITE
FEEL

ICE
QUEEN

LAVA
ROCK

VANILA
PEPPER

5

COLORS

—

Our collections offer professional
grade performance while seamlessly blending

the latest innovations with a premium
design aesthetic crafted with authentic, high-quality
materials. Ducts.



BASALT FEEL



VANILA PEPPER



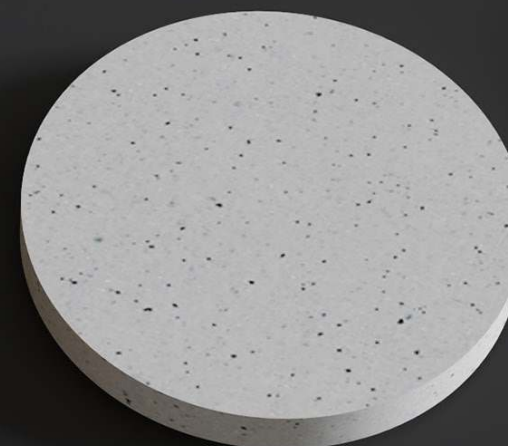
GREYLITE FEEL



LAVA ROCK



ICE QUEEN



**HERITAGE,
ART,
INNOVATION,
DESIGN.**

Each slab is unique and authentically different from all the others: the dynamic harmony of the nuances shapes surfaces with an exclusive beauty.



← GLOSSY FINISH

MATT FINISH →



15 MM
THICKNESS

Minerals.
Nature. Craftmanship.

Natural **minerals**
and raw materials,
combined in a **naturally**
random pattern.

KOREAN
SERIES

APPLICATION

Areas

KITCHEN COUNTERTOP



DINING TABLE



LIVING ROOM



FURNITURE



STAIRCASE



OFFICE TABLE



TABLE TOP



DOOR \ WINDOW
FRAME



TECHNICAL

Features

LIGHTWEIGHT



WATERPROOF



RESISTANT TO SCRATCHES



RESISTANT TO HIGH
TEMPERATURES



EASY TO CLEAN



RESISTANT TO BENDING



100% NATURAL



RECYCLABLE



HYGIENIC

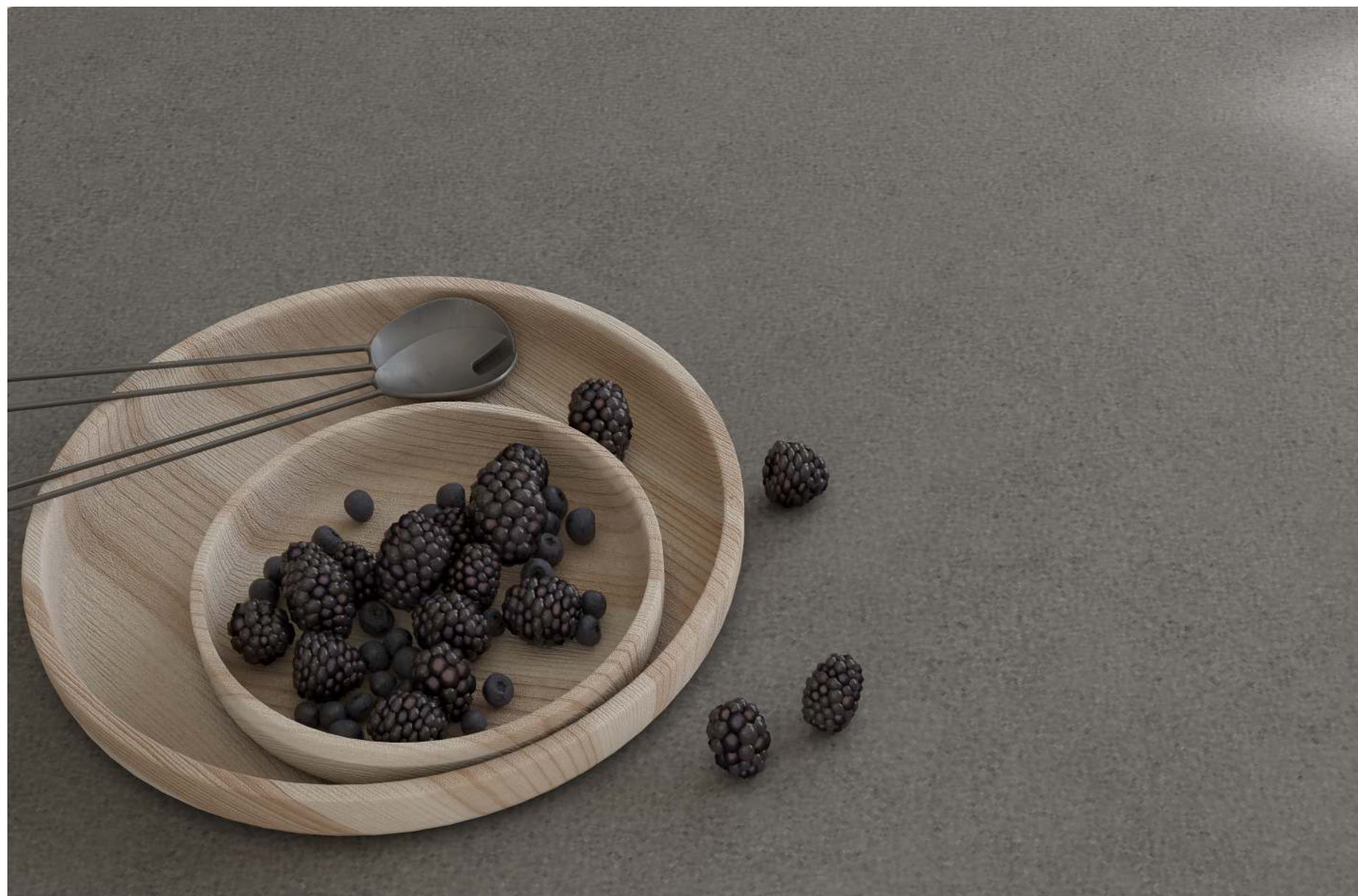


RESISTANT TO UV RAYS





TOUCH FOR
360 VIRTUAL & WALKTHROUGH



SIZE

800x3000 MM

TYPOLOGY

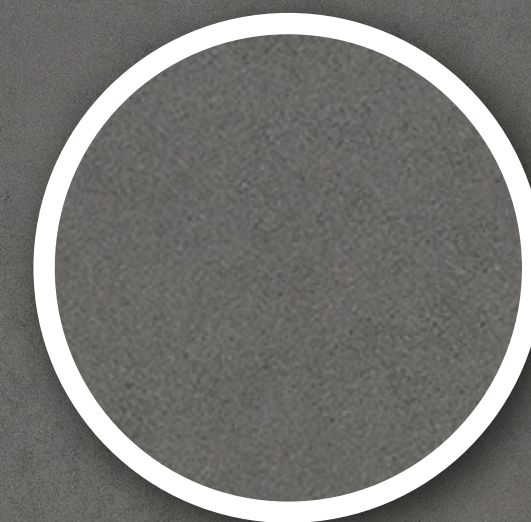
FULL BODY

FINISH

MATT

THICKNESS

15 MM



BASALT FEEL

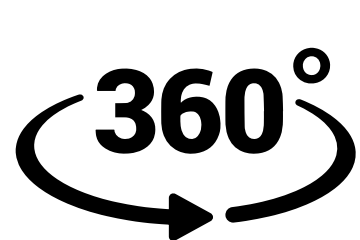


BASALT FEEL

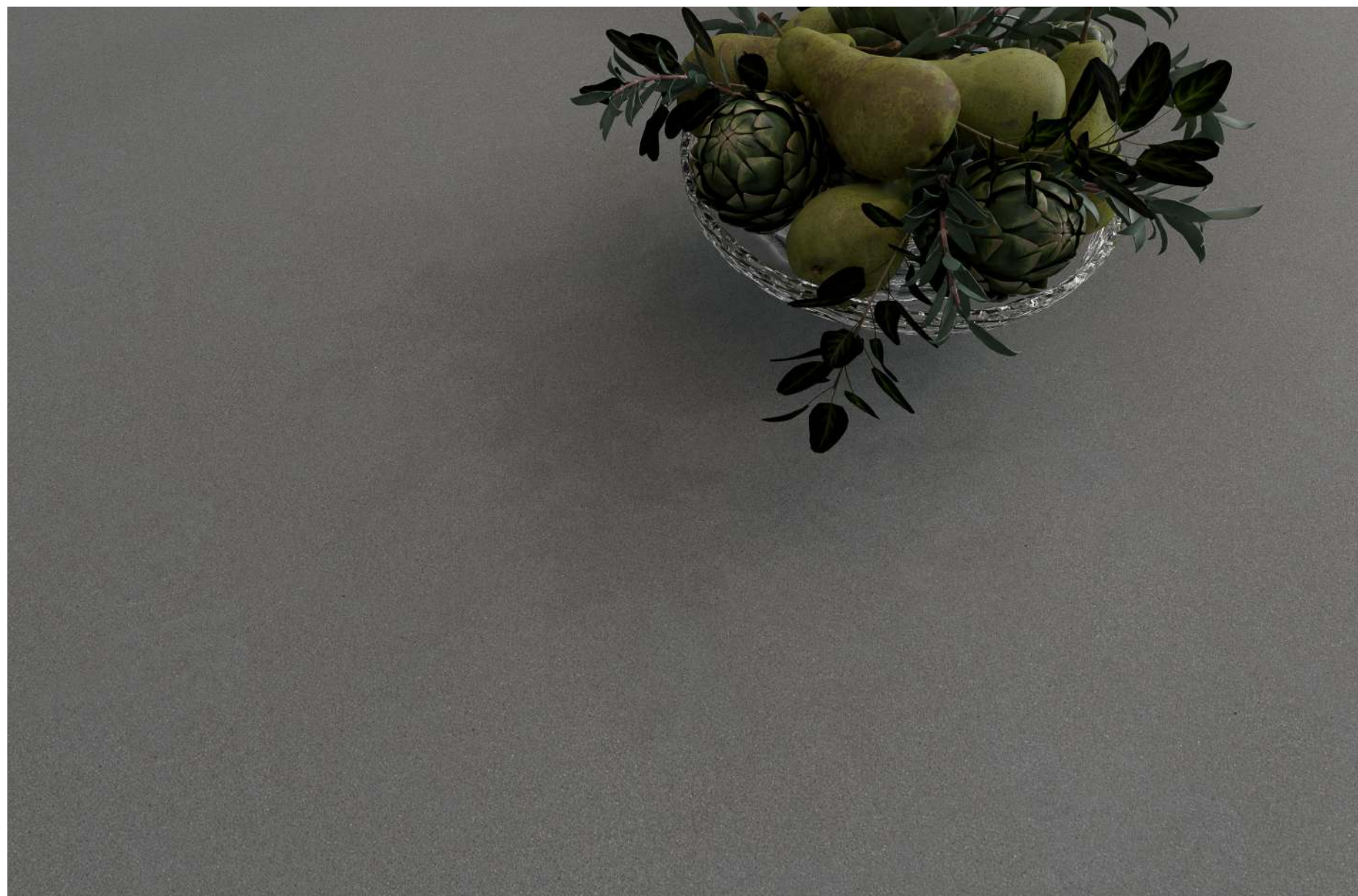
Q
U
A
L
I
T
Y



BASALT FEEL



TOUCH FOR
360 VIRTUAL & WALKTHROUGH



SIZE

800x2400 MM
800x3000 MM

TYPOLOGY

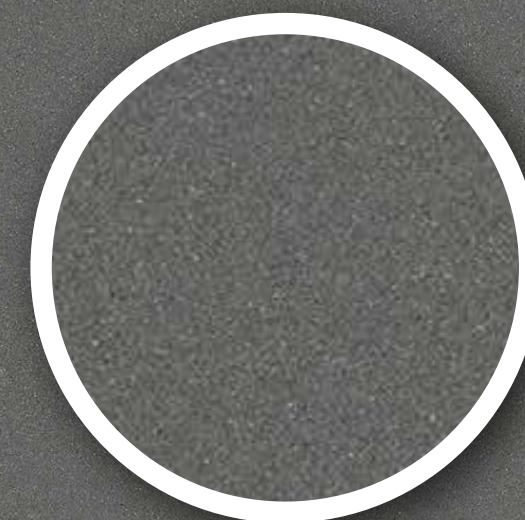
FULL BODY

FINISH

MATT

THICKNESS

15 MM



GREYLITE FEEL

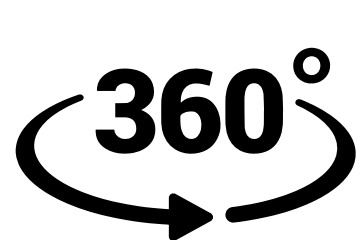


GREYLITE FEEL

E
X
O
T
I
C



GREYLITE FEEL



TOUCH FOR
360 VIRTUAL & WALKTHROUGH



SIZE

800x2400 MM
800x3000 MM

TYPOLOGY

FULL BODY

FINISH

GLOSSY / MATT

THICKNESS

15 MM



ICE QUEEN

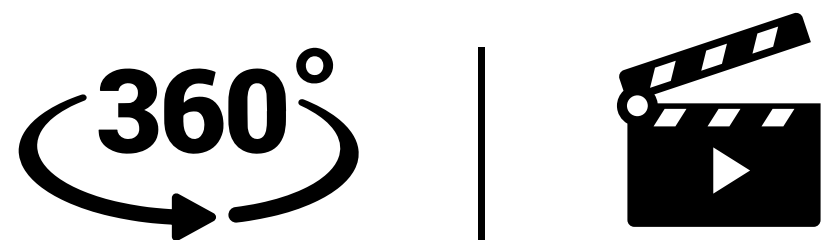


ICE QUEEN

B
E
A
U
T
Y



ICE QUEEN



TOUCH FOR
360 VIRTUAL & WALKTHROUGH

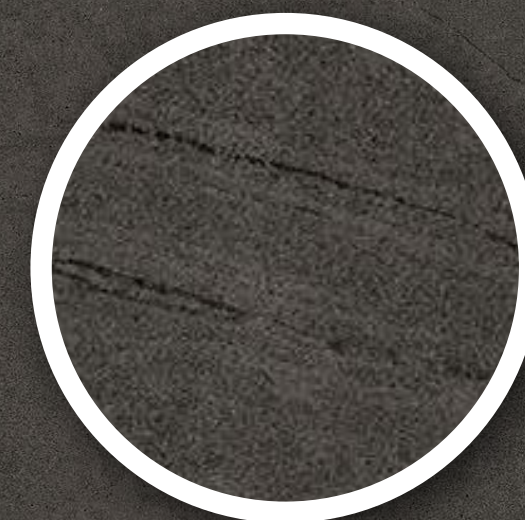


SIZE
800x3000 MM

TPOLOGY
FULL BODY

FINISH
MATT

THICKNESS
15 MM



LAVA ROCK



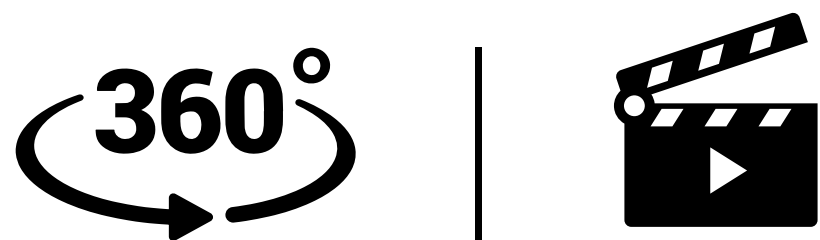
LAVA ROCK

E
N
R
I
C
H
I
N
G





LAVA ROCK



TOUCH FOR
360 VIRTUAL & WALKTHROUGH



SIZE

800x2400 MM
800x3000 MM

TYPOLOGY

FULL BODY

FINISH

GLOSSY / MATT

THICKNESS

15 MM



VANILA PEPPER



VANILA PEPPER

R E S P L E N D E N T





VANILA PEPPER



Cleaning & Maintenance

Our products are non porous (due to their high quality raw materials, stringent production parameters and state of the art technology), hence any dust or deposited waste cannot penetrate the surface.

For most cases only a damp cloth is sufficient for cleaning.

Regular cleaning highlights the aesthetic features of the surface and gives it exceptional shine.

For highly aggressive cleaning caused by some common food and substances follow the table below.

TYPE OF STAIN	CHEMICAL PRODUCT	EXAMPLE
Grease	Alkaline - Solvent	Detergent
Oil	Solvent	Ammonia, Backing Soda
Ink	Oxidant - Solvent	Alcohol, Liquid Bleach, Nail Paint Remover
Rust	Acid	Hydrochloric Acid, Vinegar, Red Harpic
Lime	Acid	Descaling Reagent, Hydro Chloric Acid
Cement	Acid	Hydro Chloric Acid
Wine	Alkaline	Ammonia, Liquid Bleach
Coffee	Alkaline - Solvent	Ammonia, Liquid Bleach
Rubber	Solvent	Alcohol, Thinner
Plaster	Acid	Hydro Chloric Acid
Candle Wax	Solvent	Alcohol, Thinner
Iodine	Oxidant	Liquid Bleach
Blood	Oxidant	Liquid Bleach
Ice Cream	Alkaline	Liquid Bleach

Note: It is recommended that any kind of stain needs to get clean immediately / as soon as possible.

Technical Specification

CHARACTERISTIC	STANDARD AS PER ISO13006:2018/ EN14411 Gr.Bla	MEAN VALUE OF IBIS	TEST METHOD
Regulatory Properties			
Deviation in Length and Width	± 0.30 % (±1.00mm)	± 0.10 %	ISO 10545-2
Deviation in Thickness	± 5.00 % (±0.50mm)	± 5.00 %	ISO 10545-2
Straightness in Side	± 0.30 % (±0.80mm)	± 0.10 %	ISO 10545-2
Rectangularity	± 0.30 % (±1.50mm)	± 0.10%	ISO 10545-2
Surface Flatness Central Curvature	± 0.40 % (±1.80mm)	± 0.50 %	ISO 10545-2
Surface Flatness Edge Curvature	± 0.40 % (±1.80mm)	± 0.50 %	ISO 10545-2
Surface Flatness Warpage	± 0.40 % (±1.80mm)	± 0.50 %	ISO 10545-2
Surface Quality	> 95% defects free	> 95% defects free	ISO 10545-2
Small Color Difference(for Plain Colour)	ΔE < 1.00	ΔE < 0.30	ISO 10545-16
Glossiness (Polished)	as per mfg.	Gloss Value> 90	Gloss Meter 60°
Glossiness (Matt)	as per mfg.	3 <Gloss Value<7	Gloss Meter 60°
Glossiness (Satin/Posh)	as per mfg.	7<Gloss Value<18	Gloss Meter 60°
Structural Properties			
Water absorption	≤ 0.50 %	≤ 0.060 %	ISO 10545-3
Bulk density	as per mfg.	Min. 2.28 g/cc	ISO 10545-3
Massive Mechanical Properties			
Modulus of rupture	Min. 35.0 N/mm²	Min. 42.0 N/mm²	ISO 10545-4
Breaking strength thickness <7.5	Min. 700.0 N	Min. 1000.0 N	ISO 10545-4
Breaking strength thickness ≥7.5	Min. 1300.0 N	Min. 1800.0 N	ISO 10545-4
Breaking strength thickness ≥7.5mm	Min. 1300.0 N	Min. 7500.0 N	ISO 10545-4
Surface Mechanical Properties			
MOH'S hardness #	as per mfg.	Glossy Min. 4*/ Posh Min. 6	BS EN 15771
Surface abrasion resistance #	as per mfg.	Glossy Min. 2/ Posh Min. 3	ISO 10545-7
Deep abrasion resistance #	Max. 175mñ	Max. 132mñ	ISO 10545-6
Thermal Hydrometric Properties			
Moisture expansion	Max. 0.06%(0.6mm/m)	Max. 0.02mm/m	ISO 10545-10
Thermal expansion(COE) at 100°C	as per mfg.	Max. 6.0 x 10 ⁻⁶	ISO 10545-8
Thermal shock resistance	Min. 10 Cycle	Min. 10 Cycle	ISO 10545-9
Impact resistance(COR) #	Min. 0.55	Min. 0.55	ISO 10545-5
Frost resistance	as per mfg.	Frost Proof	ISO 10545-12
Chemical Properties			
Resistance to staining glazed	Min. Class 3	Min. Class 4	ISO 10545-14
Resistance to household chemicals & swimming pool salts glazed	Min. Class GB	Min. Class GA	ISO 10545-13
Resistance to low concentrate acid and alkalis glazed	as per mfg.	Min. Class GLB**	ISO 10545-13
Resistance to high concentrate acid and alkalis glazed	as per mfg.	Min. Class GHB**	ISO 10545-13
Safety Properties			
Skid resistance(DCOF-DRY) ##	as per mfg.	Glossy P0(< ¹²) / Posh ≥P ¹ (¹² - ²⁴)	BS 7976-2
Slip resistance(DCOF)(R value) ##	as per mfg.	R9 to R ¹³	DIN 51130
Fire resistance	as per mfg.	Fire Proof	N.A.

* With Nano polished
** Except Hydrofluoric Acid & it's compound
Tiles Intended for use on floor
As per customer requirement

Packing Details

PRODUCT	BODY	SIZE	THICKNESS	TILES / BOX	COVERAGE AREA / BOX	WEIGHT (Kgs)
Glossy / Matt	Full Body	800x3000mm	15mm	1pc	25.83 Sq ft	84 Kgs
Glossy / Matt	Full Body	800x2400mm	15mm	1pc	20.67 Sq ft	67 Kgs



IBIS
SMART MARBLE PVT LTD

Sr No : 1067 / 1 P1,2,3,4,6
Village-Ghuntu, Taluka-Morbi,
Rajkot, Gujarat-363642, INDIA.

FOR SALES INQUIRY :

ibissmartmarble@gmail.com
export@ibissmartmarble.com

CONTACT :

+91 95812 95812

WEBSITE :

www.ibissmartmarble.com

